

KY ROÇK DRILL



EPIROC MD20



SANDVIK RD314



MONTABERT HC25

PRODUCT CATALOGUE

ABOUT US



Precision Engineering, Uncompromised Durability

At Kyrock Drill, we are a dedicated manufacturer and global supplier of high-quality alternative spare parts and complete rock drill models for heavy-duty drilling equipment.

Our comprehensive product portfolio delivers fully compatible, premium-grade solutions tailored for world-renowned brands, including Epiroc, Sandvik, Furukawa, Montabert, and Ingersoll Rand. By engineering components that perfectly match or exceed OEM specifications, we ensure that your operations sustain maximum uptime and peak efficiency under the most demanding field conditions.

Through a rigorous manufacturing approach—encompassing precise metallurgical selection, advanced heat treatment processes, and strict dimensional tolerances—Kyrock Drill has become a trusted partner for international buyers seeking reliable, cost-effective, and heavy-duty drilling components.

YUNUS SUNGUR-KENAN AFŞA
FOUNDERS

QUALITY POLICY

OUR STANDARD IS EXCELLENCE

For overseas operations, component reliability is paramount. At Kyrock Drill, quality is not a final check; it is embedded in every phase of our manufacturing cycle.

1

PREMIUM MATERIAL SELECTION

We utilize high-grade, certified alloy steels specifically engineered to withstand extreme shock, high friction, and heavy fatigue in heavy-duty environments.

2

ADVANCED HEAT TREATMENT

Every piston, shank adapter, and critical spare part undergoes specialized thermal processing to achieve the optimal balance of surface hardness and core toughness, significantly extending service life.

3

PRECISION CNC MACHINING

Our components are manufactured with exact micron-level tolerances, guaranteeing seamless interchangeability and perfect alignment with your existing rock drill fleets.

4

RIGOROUS TESTING

Each product undergoes comprehensive dimensional inspections and non-destructive testing (NDT) before packaging to eliminate any risk of structural failure on site.

EPIROC HYDRAULIC DRIFTERS



COP MD20

HIGH PERFORMANCE, LONG LIFE RELIABILITY

COP MD20 rock drill is designed and optimized for mine drifting applications. It is a robust time and cost saver with increased recommended service interval, not only on the rock drill, but also on the drill rig and drill tools, giving an almost unbeatable Total Cost of Ownership (TCO).

- COP MD20 has an improved resistance to free hammering, which gives less breakdowns and lower cost.
- New, innovative, design means fewer housing parts which gives robustness, stability and durability.
- A recommended service interval of 1000 percussion hours allows for more drilling between overhauls.

TECHNICAL DATA

HOLE DIAMETER	33 - 64 mm
POWER RATING	20 kW
APPLICATION	For underground applications
INPUT SYSTEM	Hydraulic

DIMENSIONS AND WEIGHT

WEIGHT	186 kg (410 lb)
LENGTH WITHOUT SHANK ADAPTER	915 mm (3 ft)
WIDTH INCLUDING CONNECTORS	254 mm (10 inch)
HEIGHT	238mm (9.4 inch)
HEIGHT OVER DRILL CENTER	93 mm (3.7 inch)

IMPACT RATINGS

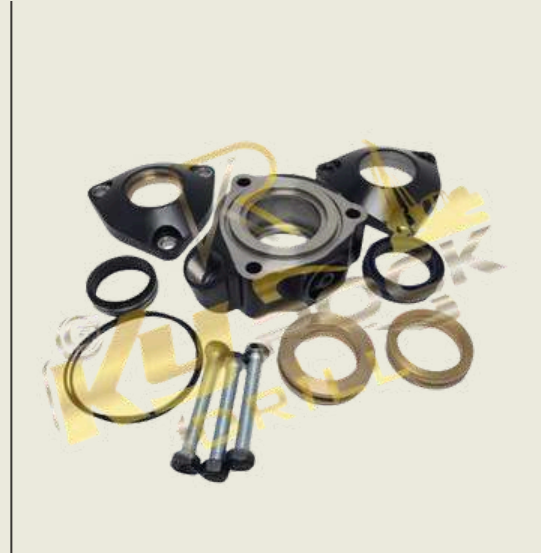
TYPE	07 (160 cc)
ROTATION RANGE	0 - 215 rpm
TORQUE (MAXIMUM)	1 000 Nm (737 lbf-ft)
WORKING PRESSURE (MAXIMUM)	210 bar (3 046 psi)
OIL CONSUMPTION	75 l/min (2.6 cfm)



3115 5356 01
PISTON



3115 5802 40
FRONT PART



3115 3190 81
FLUSH HEAD COMPL



3115 3276 00
PISTON



3115 3443 80
FLUSH HEAD COMPL



3115 5900 00
LINER



3115 5602 05
VALVE LINER



3115 5575 00
PLUG



3115 3703 00
PISTON GUIDE



3115 3063 00
BUSHING



3115 3261 00
BACK-UP RING



3115 600 58
ROTATION CHUCK BUSHING



3115 3444 10
CONNECTION PLATE



3115 5893 00
LINER



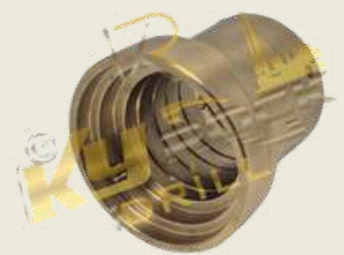
3115 3061 00
PIN



0347 6200 74
HOSE CLIP



3115 3271 00
PISTON GUIDE



3115 3274 00
PISTON GUIDE

SANDVIK HYDRAULIC DRIFTERS



RD314

HEAVY-DUTY ROCK DRILL - BUILT FOR CONTINUOUS POWER AND MAXIMUM DURABILITY

Sandvik RD314 is a compact percussive rock drill, with a high hydraulic efficiency and penetration rate, designed for bolting and face drilling rigs.

Sandvik RD314's purpose-built design and features make it a reliable, efficient tool for bolting and face drilling rigs. Its precision and performance contribute to the productivity and success of these specialized drill applications.

Sandvik RD314's modular construction and visual wear indicators ensure excellent serviceability, with service intervals of 500 percussion hours.

TECHNICAL DATA

HOLE DIAMETER	43 - 51 mm
PERCUSSION POWER	14 kW
PERCUSSION RATE	110 Hz
PERCUSSION PRESSURE	120 - 180 bar

DIMENSIONS AND WEIGHT

WEIGHT	127 kg (drilling)
LENGTH WITHOUT SHANK ADAPTER	715 mm
WIDTH INCLUDING CONNECTORS	199mm
HEIGHT	352 mm
HEIGHT OVER DRILL CENTER	204mm

IMPACT RATINGS

TYPE	07 (160 cc)
ROTATION RANGE	0 - 530 rpm
TORQUE (MAXIMUM)	340Nm
WORKING PRESSURE (MAXIMUM)	175 bar
OIL CONSUMPTION	75 l/min (2.6 cfm)



302 898 71

FLUSHING DEVICE ASSY



153 949 08

FLANGE ADAPTER



303 786 98

BODY ASSY



096 714 18

DISTRIBUTOR



150 520 08

BUSHING



097 055 08

REAR CYLINDER



150 514 08

BUSHING



150 206 78

SEAL



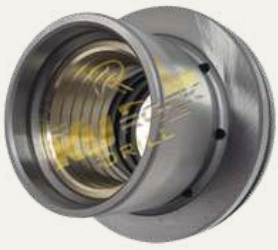
150 797 18

SEAL WASHER



152 576 38

DISTRIBUTOR



551 552 30
BEARING ASSY



BG00841546
CYLINDER



152 763 08
SEAL HOUSING



550 647 67
SEAL KIT



550 552 25
BEARING ASSY



550 508 28
DRIVER



090 475 68
GEAR WHEEL



152 266 48
BEARING BUSHING



152 716 38
STUD



550 007 62
HOUSING ASSY

FURUKAWA HYDRAULIC DRIFTERS



HD 712

MORE IMPACT, LESS RECOIL

The Furukawa HD712 is a high-performance, heavy-duty hydraulic drifter (rock drill) designed for surface crawler drill rigs.

Equipped with a patented Dual-Damper System (DDS) and a variable-stroke piston, it maximizes impact energy in hard rock formations while minimizing recoil and component wear.

TECHNICAL DATA

HOLE DIAMETER	76 mm to 102 mm
PERCUSSION POWER	18.2 kW (24.4 hp)
PERCUSSION RATE	37.5 Hz - 42 Hz
PERCUSSION PRESSURE	175 bar (17.5 MPa / 2.538 psi)

DIMENSIONS AND WEIGHT

WEIGHT	220 kg (485 lbs)
LENGTH WITHOUT SHANK ADAPTER	1,008 mm
WIDTH INCLUDING CONNECTORS	320 mm
HEIGHT	223 mm
HEIGHT OVER DRILL CENTER	88 mm

IMPACT RATINGS

TYPE	Variable-Stroke Hydraulic Piston
ROTATION RANGE	0 - 190 rpm
TORQUE (MAXIMUM)	1,417 Nm (1,045 ft-lbs)
WORKING PRESSURE (MAXIMUM)	201 bar (2,914 psi / 20.1 MPa)
OIL CONSUMPTION	65 - 85 L/min



HD712-01012
BUSH



HD712-01049
SEAL RETAINER



HD712-02003
CHUCK DRIVER



HD712-01068
VALVE



HD712-01507
DAMPING SLEEVE



HD712-01101
PISTON



HD712-02025
CHUCK DRIVER BUSH



HD712-02031
CHUCK DRIVER BUSH



HD712-01068
PLUG



HD712-02350
PLAIN BEARING



HD709-02007
GEAR DRIVE



HD712-01008
SEAL RETAINER



HD709-02006
DRIVER



HD712-01068
VALVE



HD712-02202
FRONT BUSH



HD712-02346
RETAINER



HD712-02347
THRUST WASHER



HD709-01060
VALVE



HD712-02002
ROTATION BUSHING



HD712-02345
RING GRIDE

MONTABERT HYDRAULIC DRIFTERS



HC 25

FOR BOTH SURFACE AND UNDERGROUND

The Montabert HC25 is an ultra-compact, 72 kg hydraulic drifter designed for versatile face drilling and rock bolting in surface and underground mines. It features a unique tie-rodless monobloc design and an integrated energy recovery valve to maximize drilling efficiency while significantly reducing maintenance costs

TECHNICAL DATA

HOLE DIAMETER	32 - 51 mm
PERCUSSION POWER	6 - 8 kW (10 hp)
PERCUSSION RATE	55 - 65 Hz
PERCUSSION PRESSURE	110 - 150 bar

DIMENSIONS AND WEIGHT

WEIGHT	72 kg (158 lb)
LENGTH WITHOUT SHANK ADAPTER	694 - 702 mm
WIDTH INCLUDING CONNECTORS	200 mm (7.87 inc)
HEIGHT	191.5 mm
HEIGHT OVER DRILL CENTER	83.5 mm

IMPACT RATINGS

TYPE	Hydraulic drifter
ROTATION RANGE	180 - 300 rpm
TORQUE (MAXIMUM)	205-401 Nm
WORKING PRESSURE (MAXIMUM)	140-150 bar
OIL CONSUMPTION	30 l-48l/min



2686 3338 61
DISTRIBUTION



2686 3432 25
DISTRIBUTION BOX



2686 3342 99
DOWN CYLINDER



2686 3662 42
LINING



2686 3662 59
SLIDER



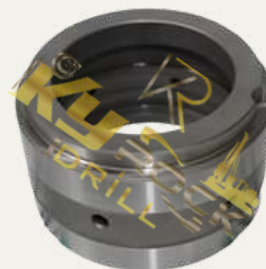
2686 3988 49
RETAINER CHUCK



2686 2202 41
RING



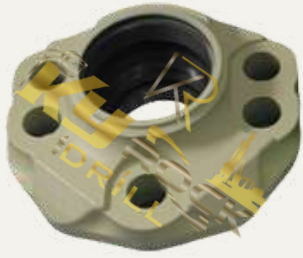
2686 3130 87
SHAFT



2686 3392 72
LINING



2686 3441 99
PLATE



2686 3247 38
COVER



2686 5114 66
GEAR



2686 3851 19
BODY



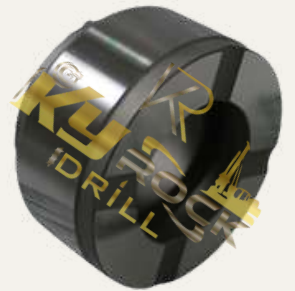
2686 5114 58
SPLINED SHANK



2686 6116 21
REAR LINING



2686 6116 39
STOP PISTON



2686 6459 67
SHANK RETAINER



2686 5114 58
SPLINED SHANK



2686 3131 29
GEAR



2686 3337 13
THRUST PISTON

INGERSOLL RAND HYDRAULIC DRIFTERS



YH70

HIGH RELIABILITY AND POWERFUL PENETRATION

The YH70 hydraulic drifter delivers the perfect balance of high reliability and powerful penetration. Engineered for extreme mining and tunneling conditions, it combines a 14 kW impact output with an advanced shock-absorbing system. This maximizes your drilling speed while protecting your equipment from wear. With its heavy-duty design and reverse percussion feature, the YH70 ensures non-stop productivity and minimal downtime on every job site.

TECHNICAL DATA

HOLE DIAMETER	64 mm - 102 mm
PERCUSSION POWER	14 kW
PERCUSSION RATE	46 Hz
PERCUSSION PRESSURE	140 bar (2.030 psi)

DIMENSIONS AND WEIGHT

WEIGHT	190 kg (418 lb)
LENGTH WITHOUT SHANK ADAPTER	1.007 mm
WIDTH INCLUDING CONNECTORS	370 mm
HEIGHT	320 mm
HEIGHT OVER DRILL CENTER	110 mm

IMPACT RATINGS

TYPE	Hydraulic drifter
ROTATION RANGE	220 rpm
TORQUE (MAXIMUM)	1.217 Nm
WORKING PRESSURE (MAXIMUM)	140 bar (2,030 psi)
OIL CONSUMPTION	120 l/min



2650 2078 77
CHUCK



2650 2199 63
RETAINER



2650 4068 75
CHUCK



2650 4068 67
GEAR



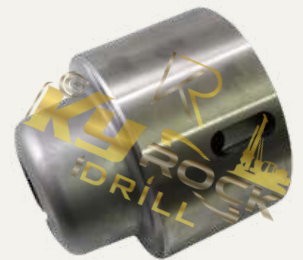
2651 2066 62
DRIVER CHUCK



2650 9660 84
SHAFT



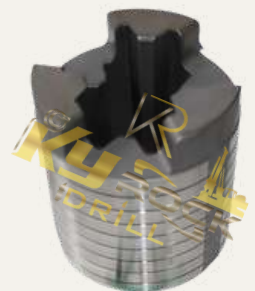
2651 2431 29
PISTON



2651 2961 84
BODY



2651 3173 60
GUIDE VALVE

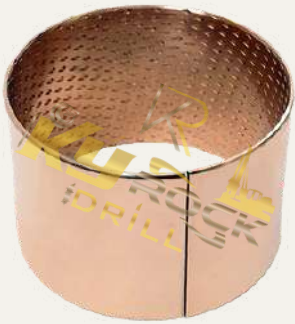


2651 5330 73
CHUCK



2650 0194 47
BUSHING

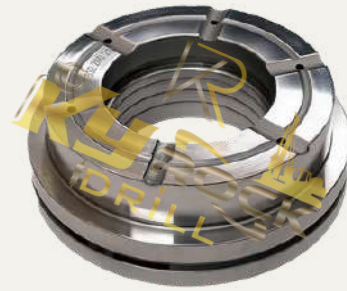
2650 2029 93
SHANK ALIGNER



2651 2064 98
BUSHING

2651 5331 07
BUSHING

2651 3173 86
PISTON



2653 2260 23
LINER FRONT

2651 3255 46
SHAFT GEAR



2651 5331 15
LINER CAP

2651 2065 22
GEAR DRIVE

2651 6699 68
VALVE

DRILLING MACHINE SPARE PARTS

Drilling machine spare parts are critical for maintaining operational continuity and high performance in heavy industries like mining and construction. Because these machines operate under extreme impact and severe wear, using high-quality or OEM components ensures peak efficiency. Regular replacement of vital parts—such as hydraulic sealing elements, filters, and power transmission gears—effectively minimizes workplace accident risks and prevents catastrophic mechanical breakdowns.

Investing in reliable spare parts ultimately delivers significant long-term cost savings by reducing unexpected downtime. Partnering with specialized suppliers for genuine components extends equipment longevity and secures reliable field operations. This proactive maintenance strategy keeps projects on schedule and protects heavy machinery investments in harsh working environments.



SMART ROC T40

FOR MORE INFORMATION
WWW.KYROCKDRILL.COM
EXPORT@KYROCKDRILL.COM

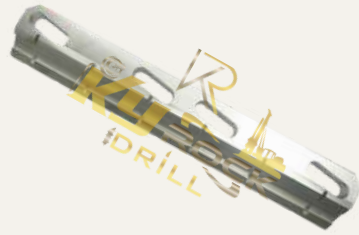


DX 800

FOR MORE INFORMATION
WWW.KYROCKDRILL.COM
EXPORT@KYROCKDRILL.COM



134 887 18
SUCTION CUP



3128 0784 32
HOLDER



550 653 65
LOCK RUBBER



3128 3035 27
DOVEL



3128 3074 88
SLIDE PIECE



3222 3076 24
COUPLING



3216 9339 15
GASKET



3128 3076 53
CRADLE PLATE



3217 0528 00
SKIRT



3222 3165 29
PUMP



3128 3037 03
DOWEL



3128 3140 12
HOLDER



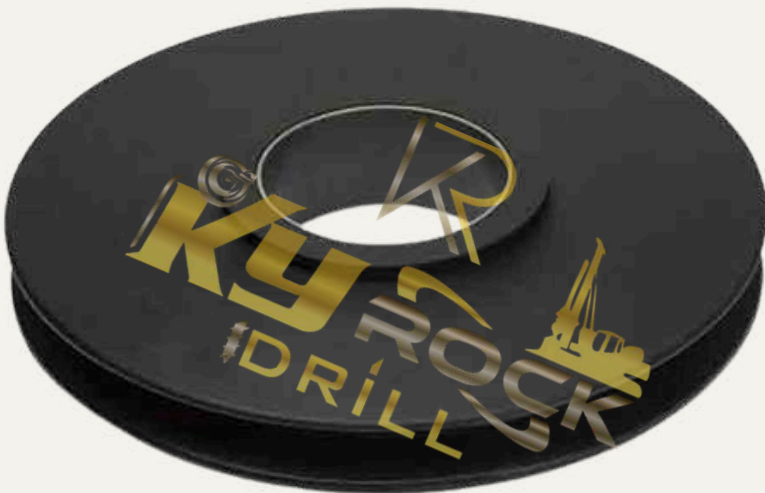
3128 0475 00
HOSE DRUM



3128 0781 97
PULL ROPE



3222 3140 70
COOLER



3222 3411 67
DRUM



3128 0784 45
CRADLE PLATE



3222 3209 10
SHAFT



3128 2403 00
JAW



3128 2407 03
BUSHING HALF

OUR VALUES & SUPPLY CHAIN



DESIGNED FOR MAXIMUM UPTIME, DELIVERED WITH PRECISION.

At Kyrock Drill, our core value is operational continuity. We understand that every minute of downtime in mining and drilling operations represents a significant financial loss.

That is why we do not just manufacture parts; we engineer reliability and ensure it reaches your site through a seamless global logistics network.

HEAVY-DUTY RELIABILITY

We focus strictly on severe-wear environments, ensuring our alternative spare parts meet or exceed strict industry demands.

GLOBAL SUPPLY CHAIN

Strategically located to manage international trade efficiently, we ensure rapid order processing and high-availability stock for critical part numbers.

SECURE & ROBUST PACKAGING

Heavy machinery components require heavy-duty protection. All components and seal kits are packed in engineered, reinforced crates to prevent any damage during long-distance transit.

CUSTOMER-CENTRIC MANUFACTURING

We adapt to the evolving fleets of our international buyers, continuously expanding our portfolio for Epiroc, Sandvik, Furukawa, and Montabert equipment.

GET IN TOUCH WITH US

Your Trusted Partner for Heavy-Duty Drilling Components.
Thank you for exploring our product catalog. For price quotations, stock availability or technical inquiries, our export team is ready to assist you.

EMAIL: EXPORT@KYROCKDRILL.COM

WEBSITE: WWW.KYROCKDRILL.COM

WHATSAPP: +90 533 963 5830

CUSTOMER SUPPORT HOURS (MON-FRI / 10AM-5PM)

LOCATION: 1244 STREET N.12 OSTIM 06374 YENIMAHALLE ANKARA
TURKEY

Kyrock Drill is an independent manufacturer of alternative spare parts. OEM part numbers, descriptions, and names are used for reference purposes only.

